



Your Innovation Diagnostic Session

Client Information & Questionnaire



This document belongs to you. The document template from which this report is generated is the property of Enterprise Ireland and may only be used for the purpose for which it is supplied. Reproduction of the document template in whole or in part, is strictly prohibited without the express written permission of Enterprise Ireland

 **ENTERPRISE
IRELAND**

INNOVATION MANAGEMENT KEY ELEMENTS

Enterprise Ireland is the Irish Government agency responsible for supporting Irish companies to start, innovate and scale internationally. This self-assessment tool supports the early planning and preparation that is critical to a company's ability to improve its innovation capability.

You can innovate in a product, service, process, model, method or a combination of these. For example, a model can be a business model, an operational model or any other value realisation model. Anything, in any area, can be innovated.

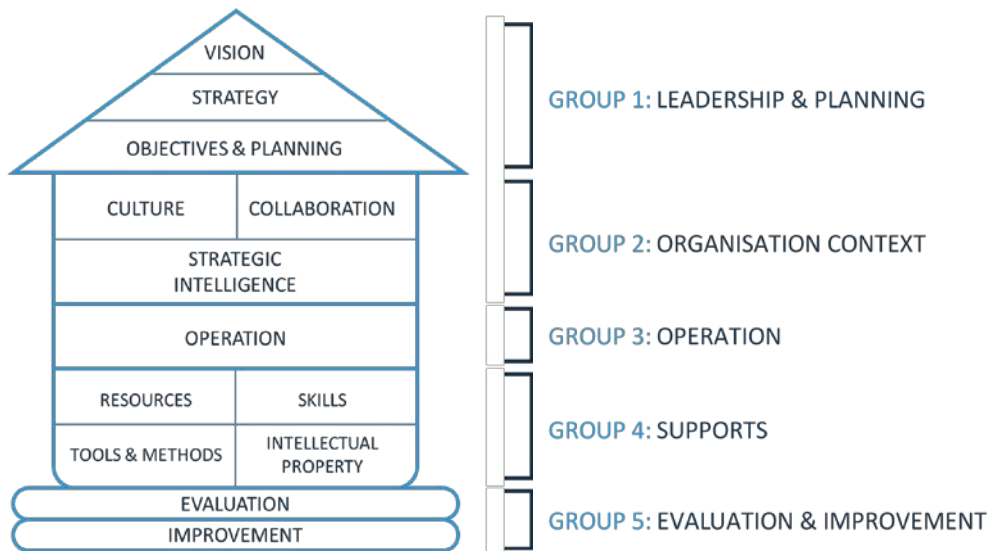
The innovation capabilities of an organisation include the ability to understand and respond to changing conditions of its context, to pursue new opportunities and to leverage the knowledge and creativity of people within

the organisation in collaboration with external stakeholders and partners.

The ISO 56000 Series of guidance standards on Innovation Management has been developed by innovation experts from across the world. It provides international best practice on the systematic management of innovation activities in organisations of all types and all sizes.

Organisations that proactively manage innovation activities as outlined in the ISO 56000 series will ultimately be more likely to take effective action and achieve sustained success by systematically addressing customer needs.

This diagnostic focuses on five of the key groups of innovation management elements aligned with the ISO 56000 series: Leadership & Planning; Organisation Context; Operation; Supports; Evaluation & Improvement (as shown in the diagram below). These elements and their interactions are needed for an organisation to establish its innovation capabilities for the purpose of effectively and sustainably achieving innovations.



INNOVATION MANAGEMENT KEY ELEMENTS - ISO 56000 SERIES

This exercise and output report allows business leaders to take a holistic view of the areas in their organisations. Leaders can understand where the opportunities are for improvement in developing their innovation capabilities based on the 5 key element groups.

The innovation diagnostic is a facilitated collaborative group exercise. It is a more comprehensive and in-depth assessment that the innovation scorecard resulting in a more detailed and insightful analysis of where there are opportunities to develop organisation innovation capability.